

Coventry Evening Telegraph

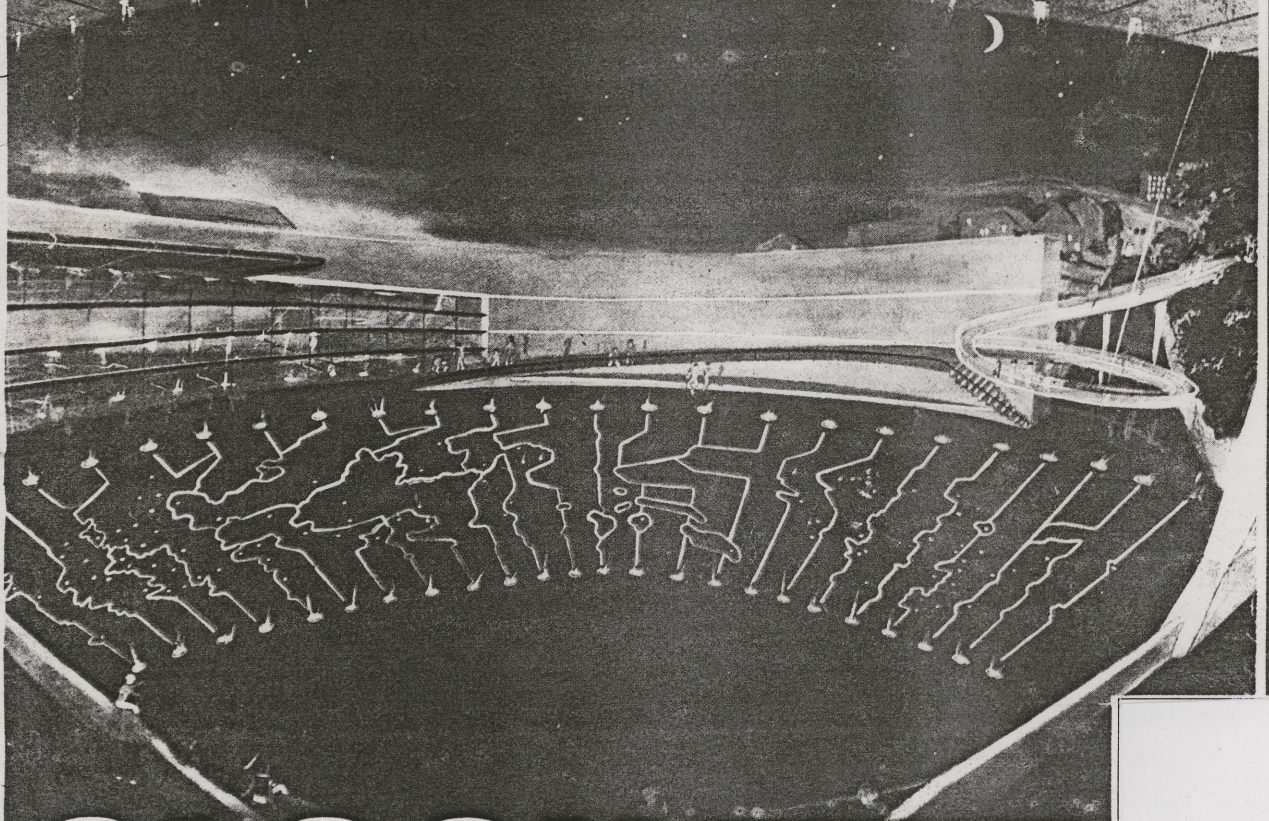
CITY FINAL

FRIDAY, MAY 14, 1999

BT MIDLANDS NEWSPAPER OF THE YEAR

30p

AMAZING MILLENNIUM CLOCK THAT WILL REPLACE THE OLD COVENTRY THEATRE



CLOCK THIS!

By BARBARA GOULDEN

THIS SPACE age structure is unveiled today as the stunning millennium clock which will be the centrepiece of Coventry's £20 million Phoenix Initiative.

City architects revealed the futuristic glass and steel clock as the replacement for the old Hippodrome Theatre in Hales Street.

The clock, with its illuminated strips will indicate the time zones of the world. It follows the same design used on atlases and short-wave radios.

The clock - which planners have agreed will stand at one end of the Phoenix walkway - will cover a fan-shaped area of rising ground with the re-vamped British Museum of Motor Transport on the left.

Absolutely thrilled

Council leader John Fletcher is absolutely thrilled by the choice of design, from Belgium artist Francoise Schein, that will cost an estimated £300,000.

He said: "The Phoenix Initiative has really hit the big time with this clock - it will certainly put

Turn to Page 3

MAP SHOWING EXACTLY WHERE THE CLOCK WILL GO, PAGE 3

Coventry's amazing millennium clock

From Page 1

Coventry on the world map.

"What could be more appropriate to this city with its watch-making and engineering heritage than a magnificent new timepiece for the new millennium?"

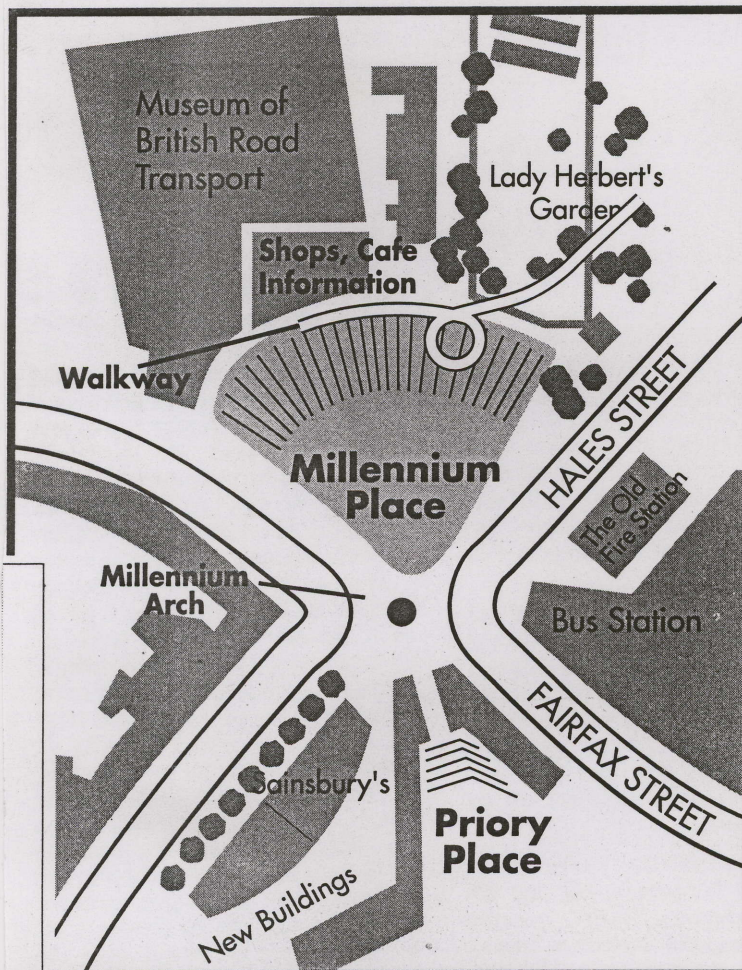
The glass and steel clock, has 24 bars which will light up to indicate each hour of the day. The clock's background will be a world map with illuminated spots showing the exact time in Coventry's 26 twin cities.

Ms Schein is believed to have won over members of the Millennium Forum selection panel, including busi-

ness and council leaders, with her imaginative design and fascination for Coventry's watch-making history.

The walkway on the right of the picture is Ms Schein's impression of the glass bridge, also part of the Phoenix Initiative running from Holy Trinity Church to the motor museum.

But Phoenix spokeswoman Moore Flannery said: "This picture of the clock is as it will look from a viewpoint at the bottom of Trinity Street on the right hand side. It is not an accurate picture of the glass bridge. We expect to be releasing detailed designs for this late next week."



SOMETHING OLD, SOMETHING NEW: The old Hippodrome, now a bingo hall, which will make way for the clock - the city's new centrepiece





COVENTRY
UNIVERSITY

OCTOBER 1999

NEWSLETTER OF COVENTRY UNIVERSITY

BLUEPRINT

THE UNIVERSITY IN THE COMMUNITY

University plays its part in Phoenix Initiative

Coventry University is all set to play a major part in Coventry's Phoenix Initiative that will restructure and regenerate a key part of the City Centre.

Jill Journeaux, Head of the Visual Arts Subject Group, here at the University, is a member of the Selection Committee that has interviewed and selected artists that have now been contracted to undertake work in the City over the next three years. Pete McCarthy, a former Head of Visual Art, has also been a key member of the Committee.

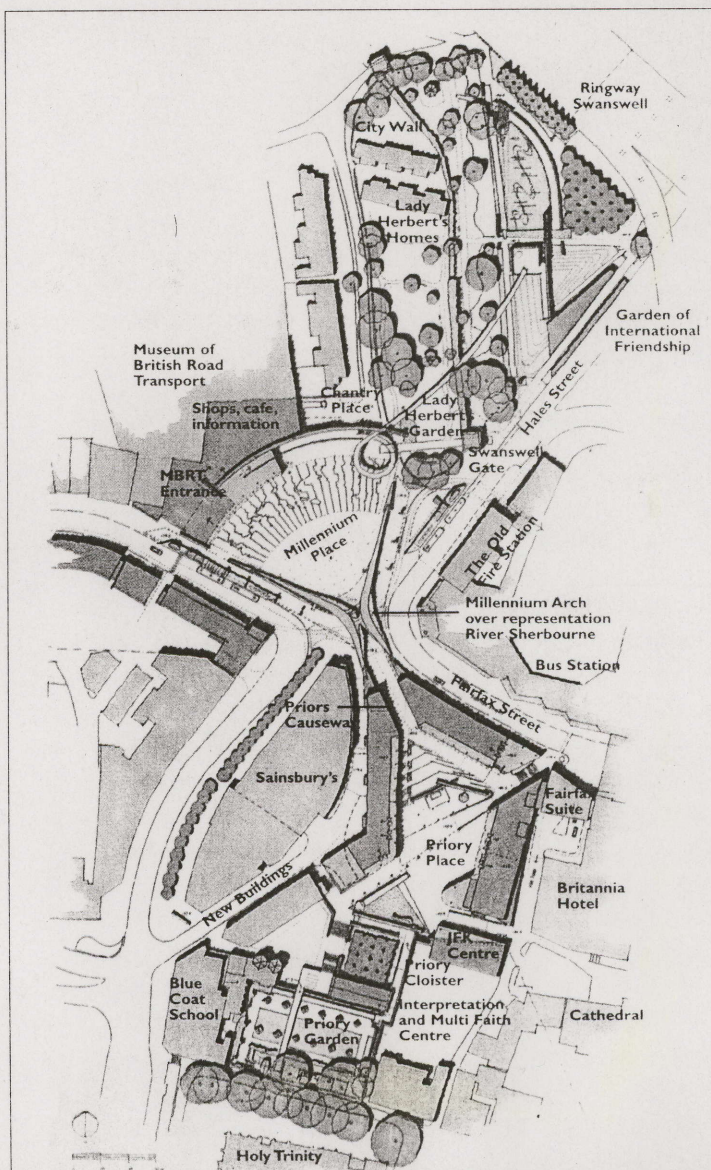
Two international artists have been selected to contribute major artworks as part of the Initiative, German artist Jochen Gerz, and Belgian Françoise Schein, with both joining the University as Senior Research Fellows. Jochen and Françoise will also provide Coventry University students with the opportunity to get involved with their projects.

But the University's involvement doesn't end there! MA Fine Art graduate Chris Browne who graduated from the University in September 1998, will also be playing her part.

As work on the Phoenix Initiative gets under way, Chris will be joining archaeologists on their dig to research artwork based around their findings. This won't be the first time she has been involved in artwork in the City. Chris designed the decorative windows for the cafe in the Pool Meadow bus station

and worked with Coventry Cathedral on a Diocesan Map commissioned for the 75th anniversary of the diocese.

For further information about the University's involvement with the Phoenix Initiative, contact Jill Journeaux on 8517, email: j.journeaux@coventry.ac.uk



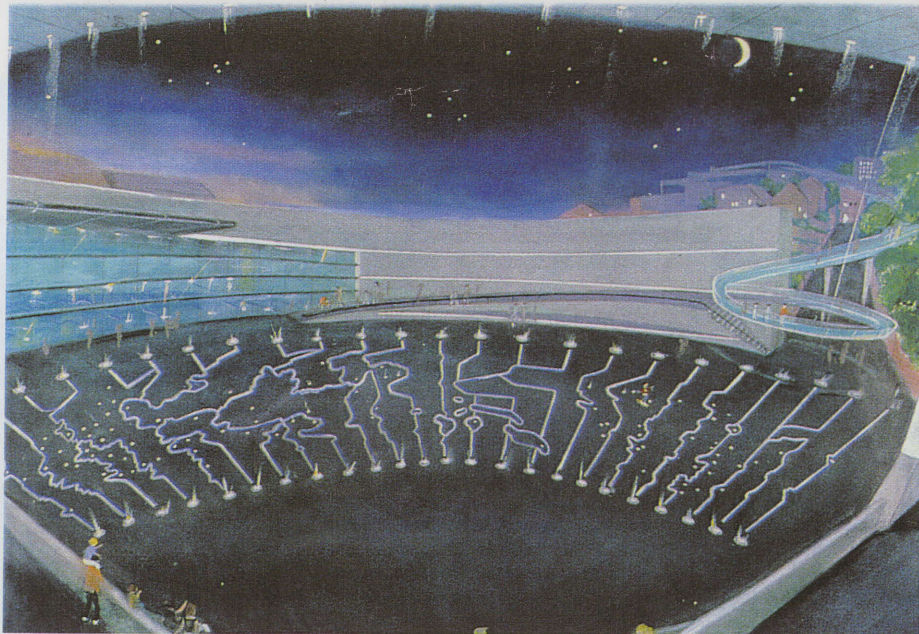
Phoenix art to knit city

Coventry is to have one of the most ambitious public art programmes in the country as part of the Coventry Phoenix project, designed to knit the city back together. Richard MacCormac of MacCormac Jamieson Prichard has masterplanned a section of the city, stretching about half a kilometre from the new and old cathedrals up to a park and the Museum of British Motor Transport.

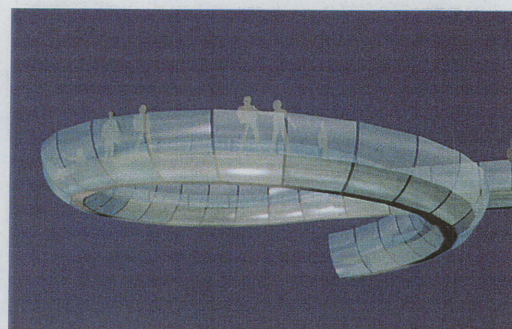
Originally the project was to involve new buildings as well, but lottery funding was not forthcoming. But with £20 million from the city and the Millennium Commission for the urban intervention itself, MacCormac is working closely with Vivian Lovell, formerly head of the Public Art Commissions Agency and now running her own consultancy Modus Operandi. The aim, said Lovell was 'to work with the grain of the project' moving away from ideas of statues of local dignitaries and creating works relevant to the place. They selected artists locally, nationally and internationally by competitive interview to create works in and around the new spaces.

In addition to the works shown here are: a residency by local artist Chris Brown who is working with archaeologists; a piece by David Ward in a cloister, using blue light and sound from within pleached hedges, giving an oral history and narrative of Coventry; an area of 'contemporary maze' within the park by Scottish artist Kate Whiteford. Also, MacCormac, working with engineer Dewhurst Macfarlane, has designed a structure of two steel arches going into the main open space. Looking like two turbine blades, this is known as the Whittle Arch after local hero Sir Frank Whittle, inventor of the jet engine.

Ruth Slavid



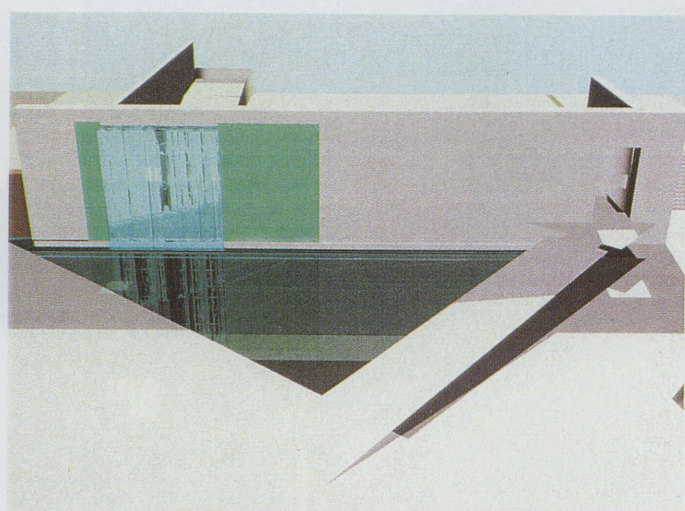
Above: French artist Francoise Schein has designed a clock of world time zones to sit at grade level in Millennium Place. It uses LEDs which pick out Coventry (near the centre) and also its many twin towns. **Below:** the MacCormac Jamieson Prichard masterplan, which includes some areas of new housing in the narrow strips near the centre. The developer and architect have yet to be selected. The turbine shape of the 'Whittle Arch' can be seen at the entrance to Millennium Place



Above: the architect worked with engineer Dewhurst Macfarlane and with artist Alexander Beleschenko on a footbridge which leads from the major open space, Millennium Place, to a garden of reconciliation in the park. Taking off with what is believed to be the longest unsupported spiral structure, the bridge is of steel, entirely encased in curved and patterned glass



German artist Jochen Gerz has designed two pieces: this 'people's bench' on the edge of Millennium Place, in which names of pairs of friends will be installed, and a 'future monument' in the park comprising a glass 'cone' with glass panels around it in which names of past enemies and of allies and friends of the city will be inscribed. The Henry Moore Foundation is supporting Gerz's work with £15,000



Susanna Heron designed this waterfall which has its exit and re-entry points contained within a wall, above a reflective pool. Her other works for the Coventry Phoenix Project also have an aquatic theme: an asymmetric pool which makes reference to a hidden river, and a rill that runs down steps. Landscape architect for the Phoenix scheme is Robert Rummy